



## Insights and news that matter



### October 2023

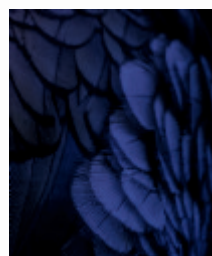
Kia ora

We live in an era of extraordinary social and environmental challenges, unprecedented in scope, complexity, and speed of change. To help you navigate the impacts of these challenges, and the opportunities to do things differently, here's our latest insights to keep you informed and to help shape your approach.

In this edition find out more from leading directors about the strategic role of climate governance, the Retail Sector Shared Scenarios Project, what must we learn from our climate response as we shape our business response to the new Taskforce for Nature-related Financial Disclosures Recommendations, take a deep-dive into our Tōmua approach designed to support social transformation in Aotearoa, and current trends influencing our infrastructure sector.

## What difference can directors make?

Practical guidance by directors for directors on the strategic role of climate governance, developed in partnership with Chapter Zero NZ and the IoD. Read more [here](#).

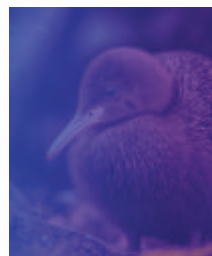


## The futures of retail

The climate scenarios described in this new report, the result of a collaboration between major New Zealand-based retailers, ask us to confront a new reality. Read more [here](#).

## Our business-nature relationship

What must we learn from our climate response to ensure a nature-positive transition for New Zealand? Find out more [here](#).



## Changing how we deliver some of the most important mahi we do

Tōmua, placing people, community and whānau at the centre of transformation. Find out more [here](#).

## Infrastructure trends in New Zealand

Our view on some of the current trends influencing the infrastructure sector – from the impact of global events, sustainability, to improving delivery. Read more [here](#).



Please don't hesitate to contact me or the IMPACT team if you'd like to discuss any of these topics further.

Feel free [share this email](#) with interested colleagues or invite them to [sign up here](#). For more IMPACT insights, view our [full library here](#).

Ngā mihi



**Simon Wilkins**

Head of KPMG IMPACT



[KPMG IMPACT](#) is our approach to help organisations be sustainable, resilient, inclusive, and focused on their impact. It brings to life five focus areas to help Māori, public and private sector organisations drive positive social and environmental outcomes for Aotearoa and all New Zealanders.



[Legal](#) | [Privacy](#) | [kpmg.com/nz](#)

KPMG New Zealand:  
18 Viaduct Harbour Avenue  
PO Box 1584  
Auckland 1140  
T: +64 9 367 5800

The information contained herein is of a general nature and is not intended to address the circumstances of any particular individual or entity. Although we endeavour to provide accurate and timely information, there can be no guarantee that such information is accurate as of the date it is received or that it will continue to be accurate in the future. No one should act upon such information without appropriate professional advice after a thorough examination of the particular situation.

© 2023 KPMG, a New Zealand Partnership and a member firm of the KPMG global organisation of independent member firms affiliated with KPMG International Limited, a private English company limited by guarantee. All rights reserved.